

## How do I recognise a pupa?

---

There are no absolute rules for identifying pupae. The following examples are guidelines

The animal is in a case that is sealed at both ends

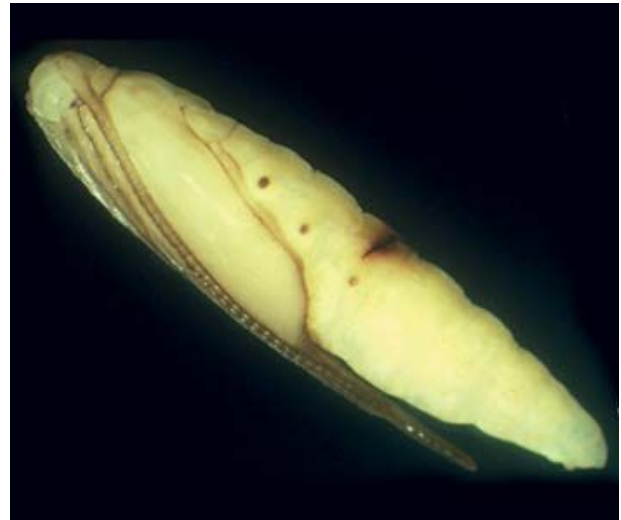


Insecta: Trichoptera

Long antennae and developing wings lying flat along the body



Insecta: Trichoptera



Insecta: Lepidoptera

Generally pupae will not key out and knowledge of them comes only from being shown by a more experienced taxonomist. The following are common examples.

Insecta: Diptera: Chironomidae



larva



pupa

How do I recognise a pupa?

Insecta: Diptera: Simuliidae

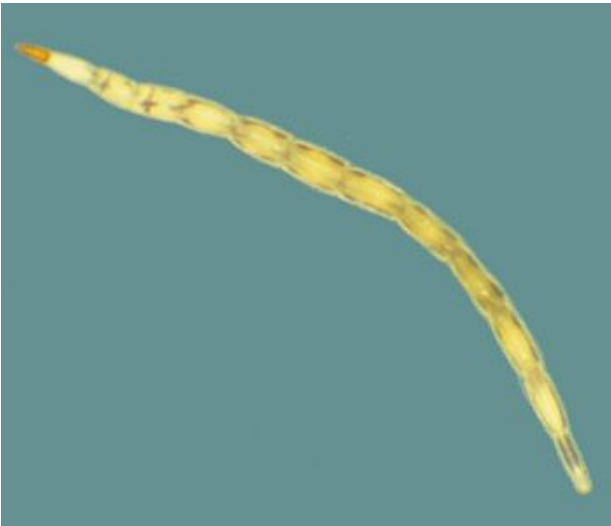


larva



pupa

Insecta: Diptera: Ceratopogonidae



larva



pupa

Insecta: Diptera: Athericidae



larva



pupa