

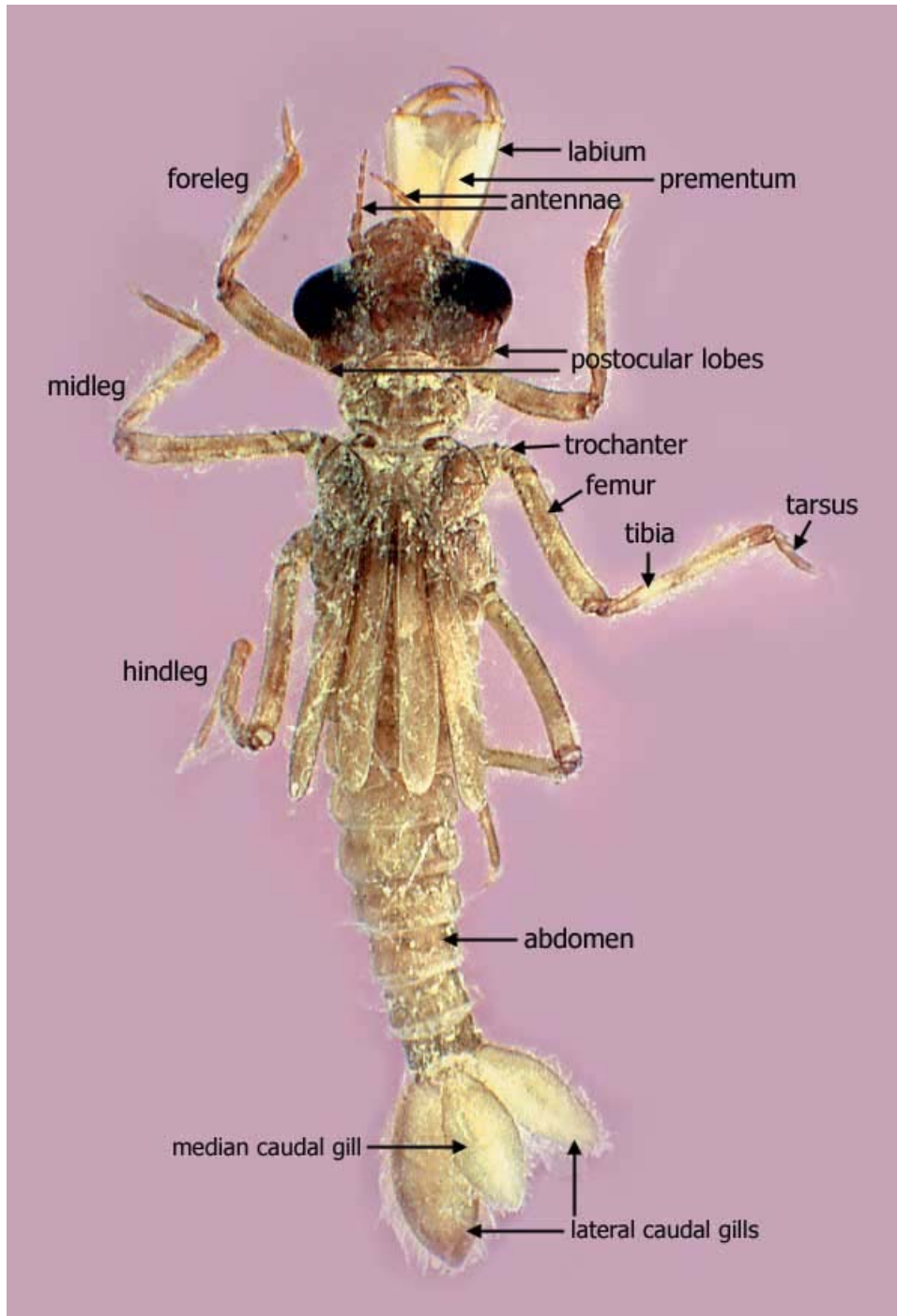
Australian Freshwater Invertebrates

An interactive guide with colour digital imagery to assist in the identification of aquatic invertebrates.



Odonata (dragonflies, damselflies)

Zygoptera (damselfly) whole nymph - dorsal view

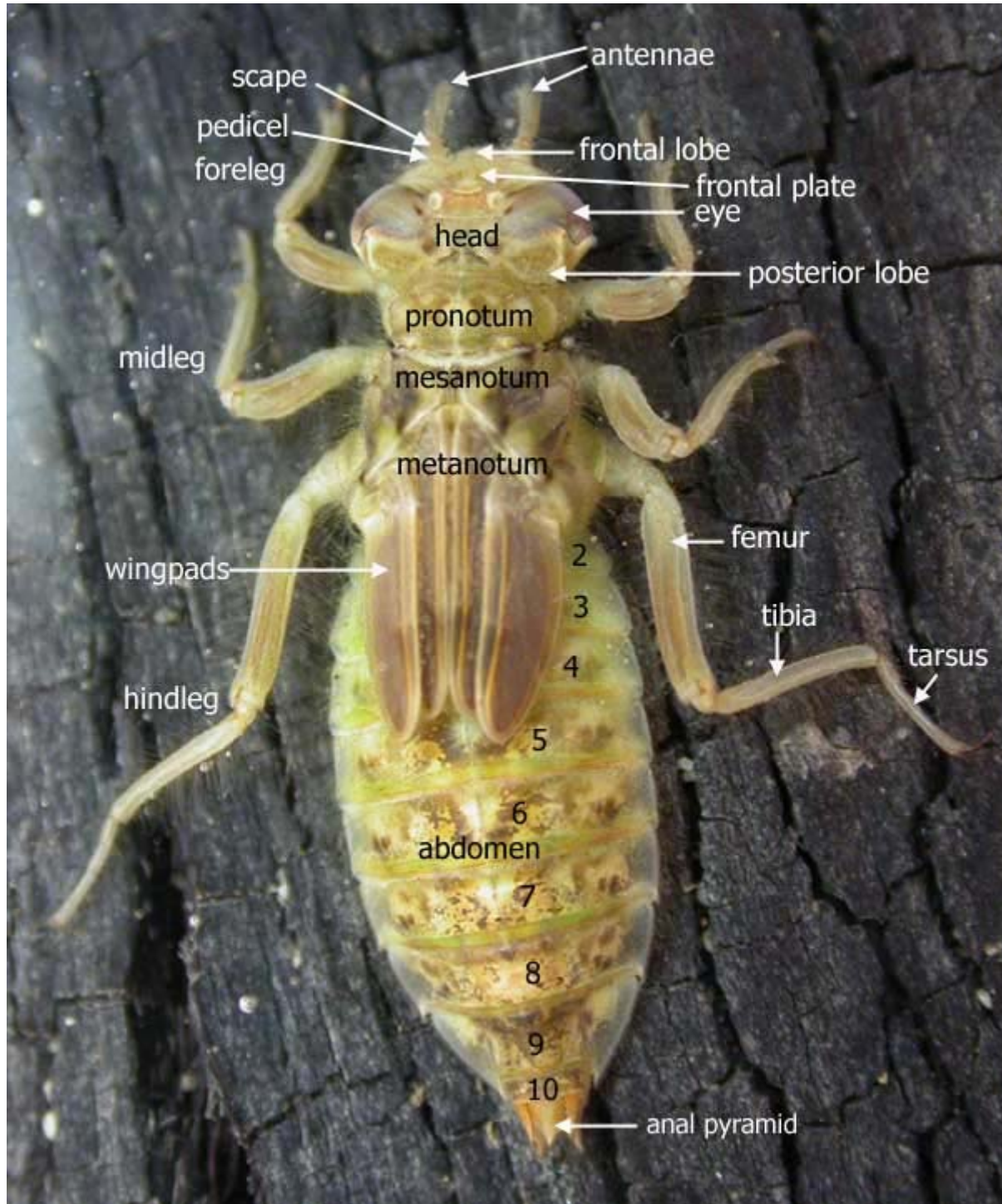


Australian Freshwater Invertebrates

An interactive guide with colour digital imagery to assist in the identification of aquatic invertebrates.



Epiproctophora (dragonfly) whole larva - dorsal view

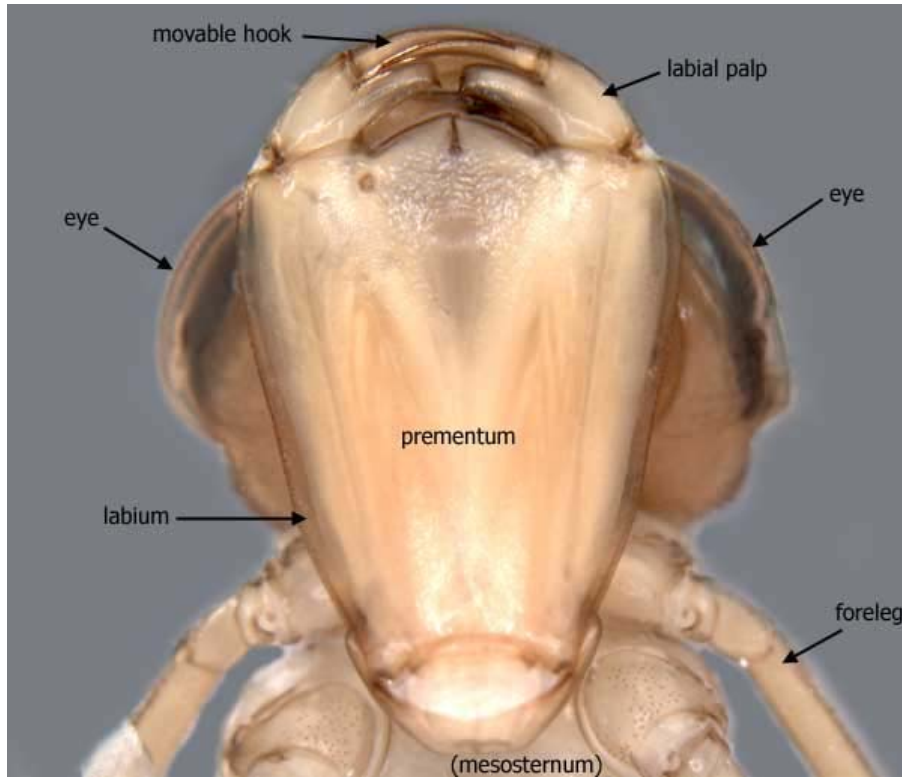


Australian Freshwater Invertebrates

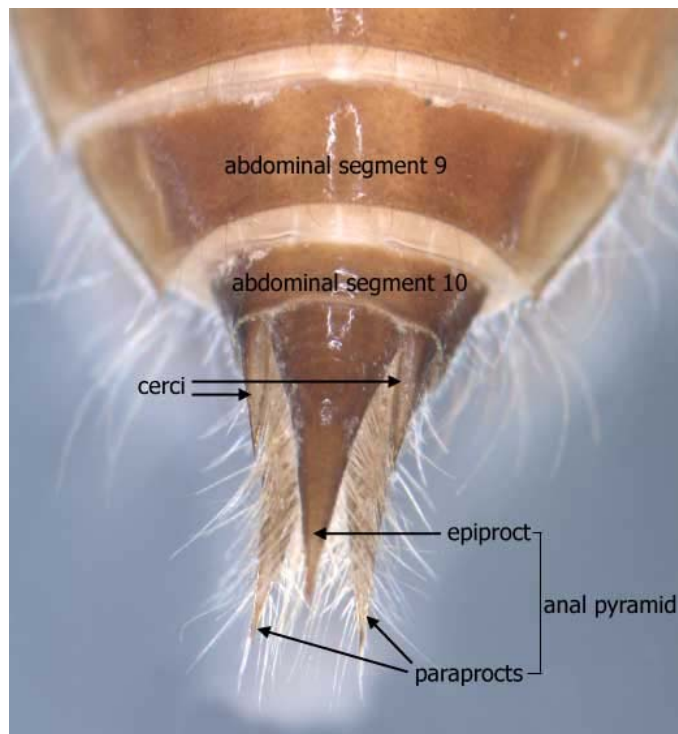
An interactive guide with colour digital imagery to assist in the identification of aquatic invertebrates.



head - ventral view



anal pyramid - dorsal view

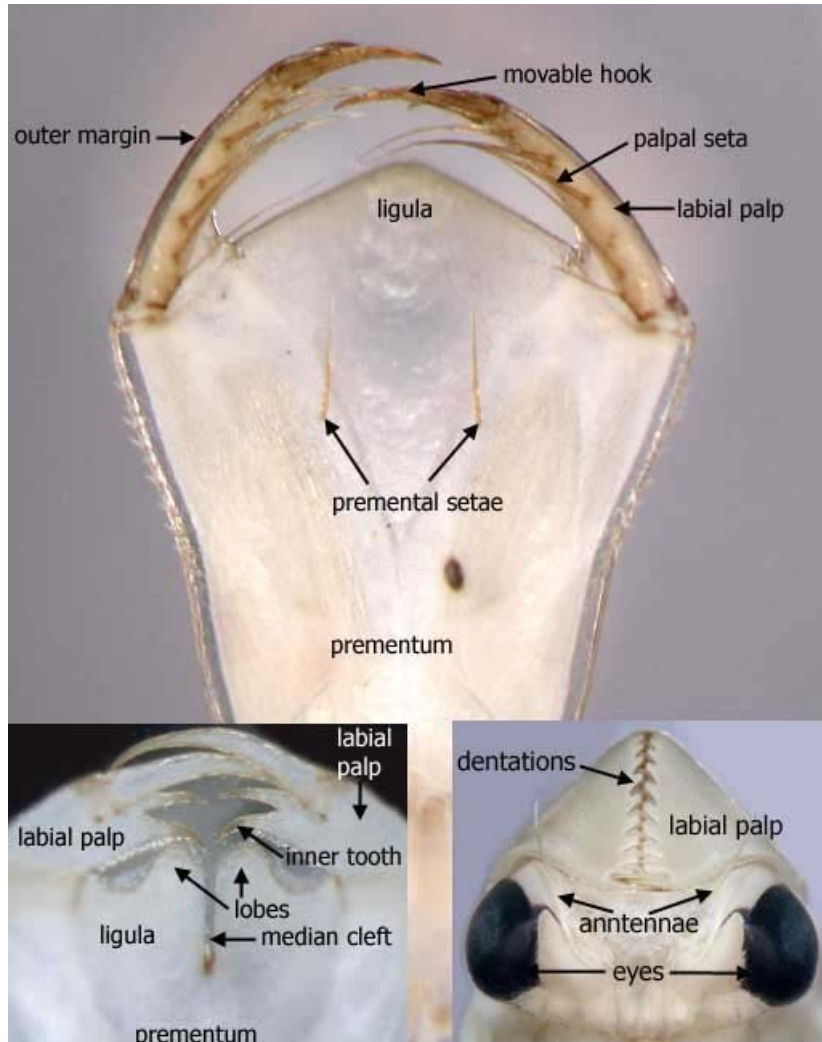


Australian Freshwater Invertebrates

An interactive guide with colour digital imagery to assist in the identification of aquatic invertebrates.



labium - inner dorsal view



caudal gill

