

How do I know if I have a terrestrial “fall-in”?

There are no absolute rules for identifying the terrestrial animals that should be left out of your sample. Generally terrestrial animals will not key out and knowledge of them comes only from being shown by a more experienced taxonomist. The following common examples are guidelines

Hind legs well developed for jumping



Long toughened wings (but not thickened elytra)



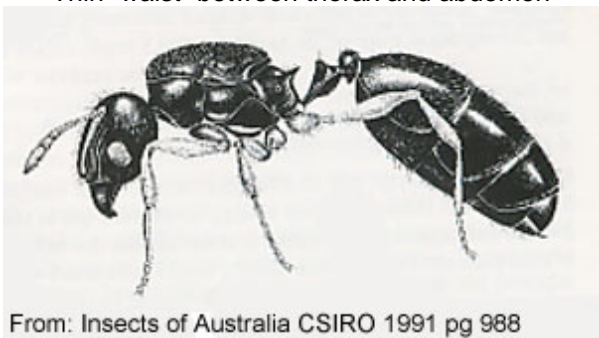
Lack of adaptations to life in the water



Soft, pale bodies from living in damp, dark leaf litter



Thin “waist” between thorax and abdomen



From: Insects of Australia CSIRO 1991 pg 988

A known terrestrial family, Insecta: Hemiptera: Thripidae

