

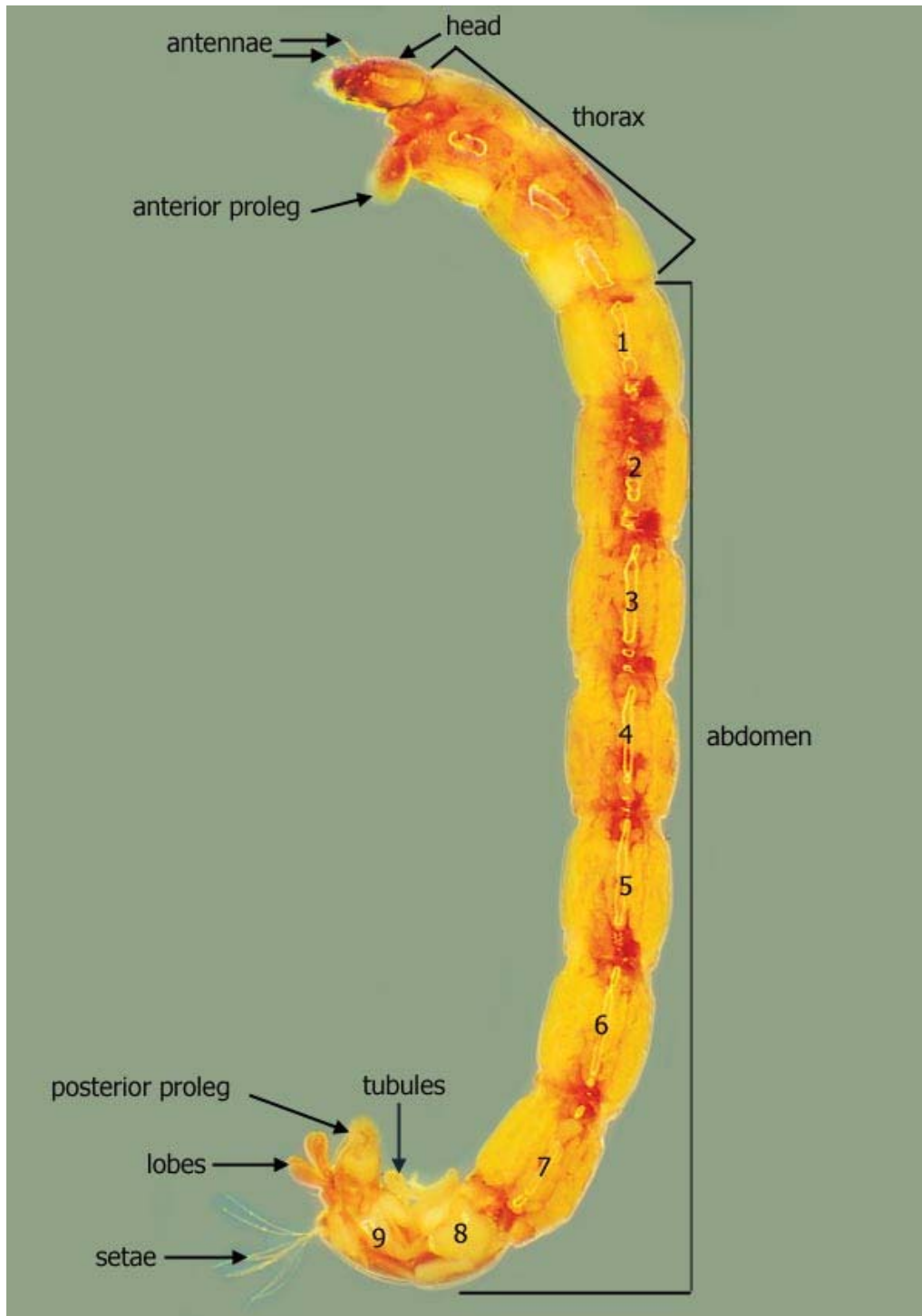
Australian Freshwater Invertebrates

An interactive guide with colour digital imagery to assist in the identification of aquatic invertebrates.



Diptera (flies)

whole larva - lateral view

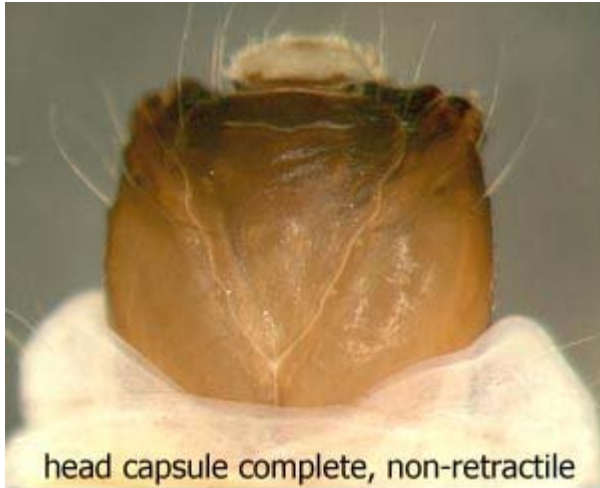


Australian Freshwater Invertebrates

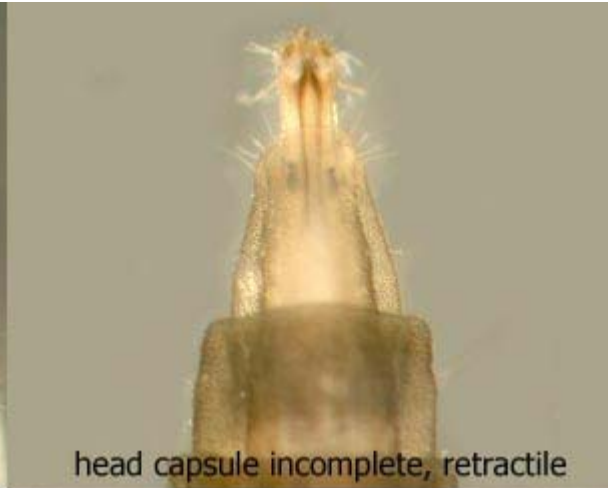
An interactive guide with colour digital imagery to assist in the identification of aquatic invertebrates.



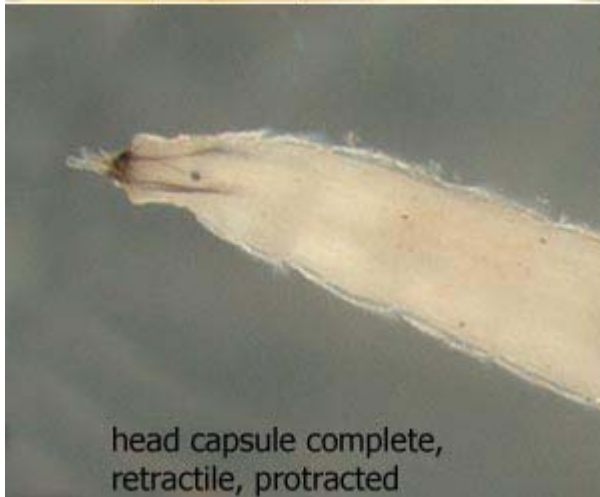
head types



head capsule complete, non-retractile



head capsule incomplete, retractile



head capsule complete, retractile, protracted



head capsule complete, retractile, retracted

Australian Freshwater Invertebrates

An interactive guide with colour digital imagery to assist in the identification of aquatic invertebrates.



posterior types

