

Australian Freshwater Invertebrates

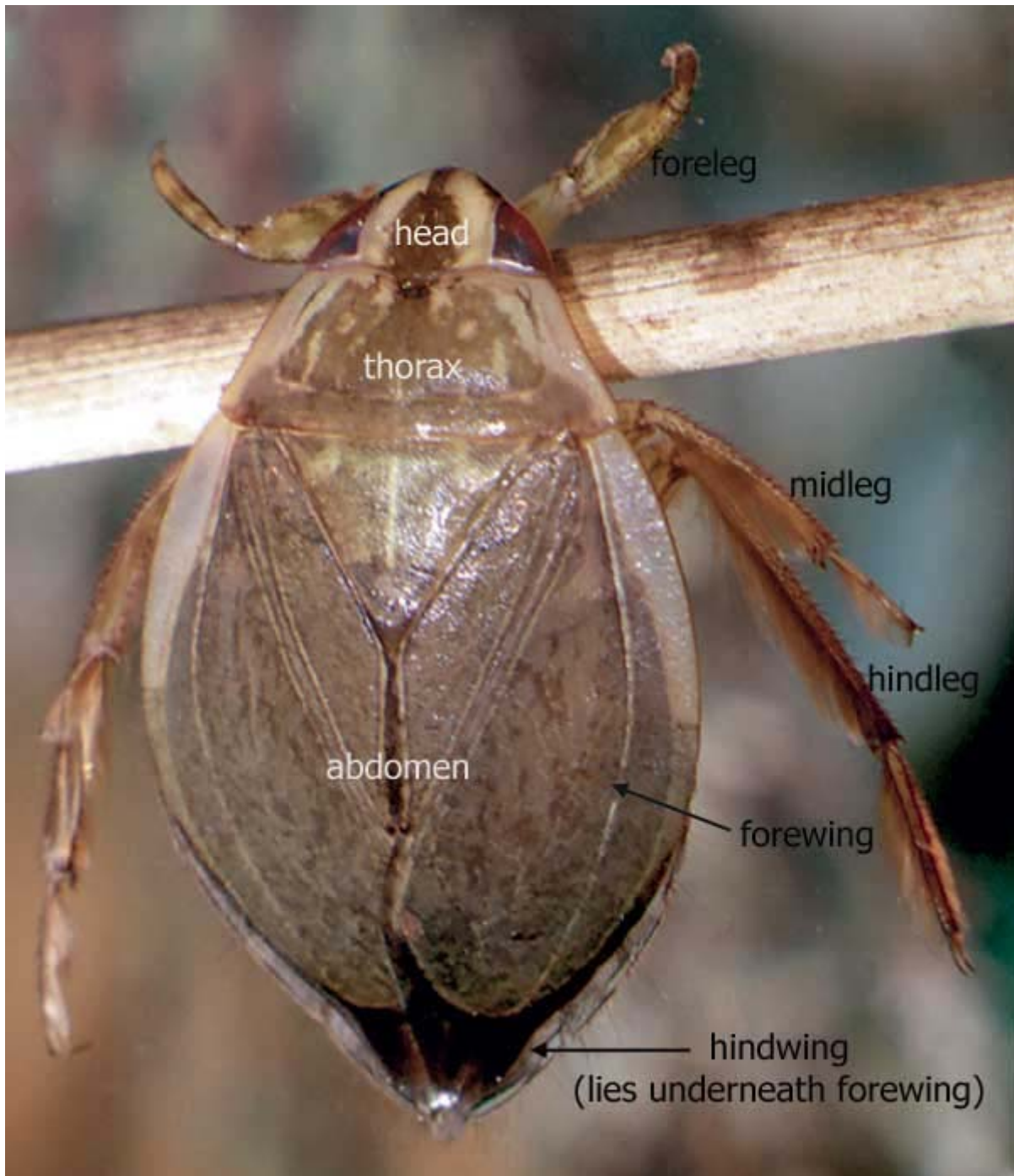
An interactive guide with colour digital imagery to assist in the identification of aquatic invertebrates.



General Macroinvertebrates

adult - dorsal view

Insecta (insects)



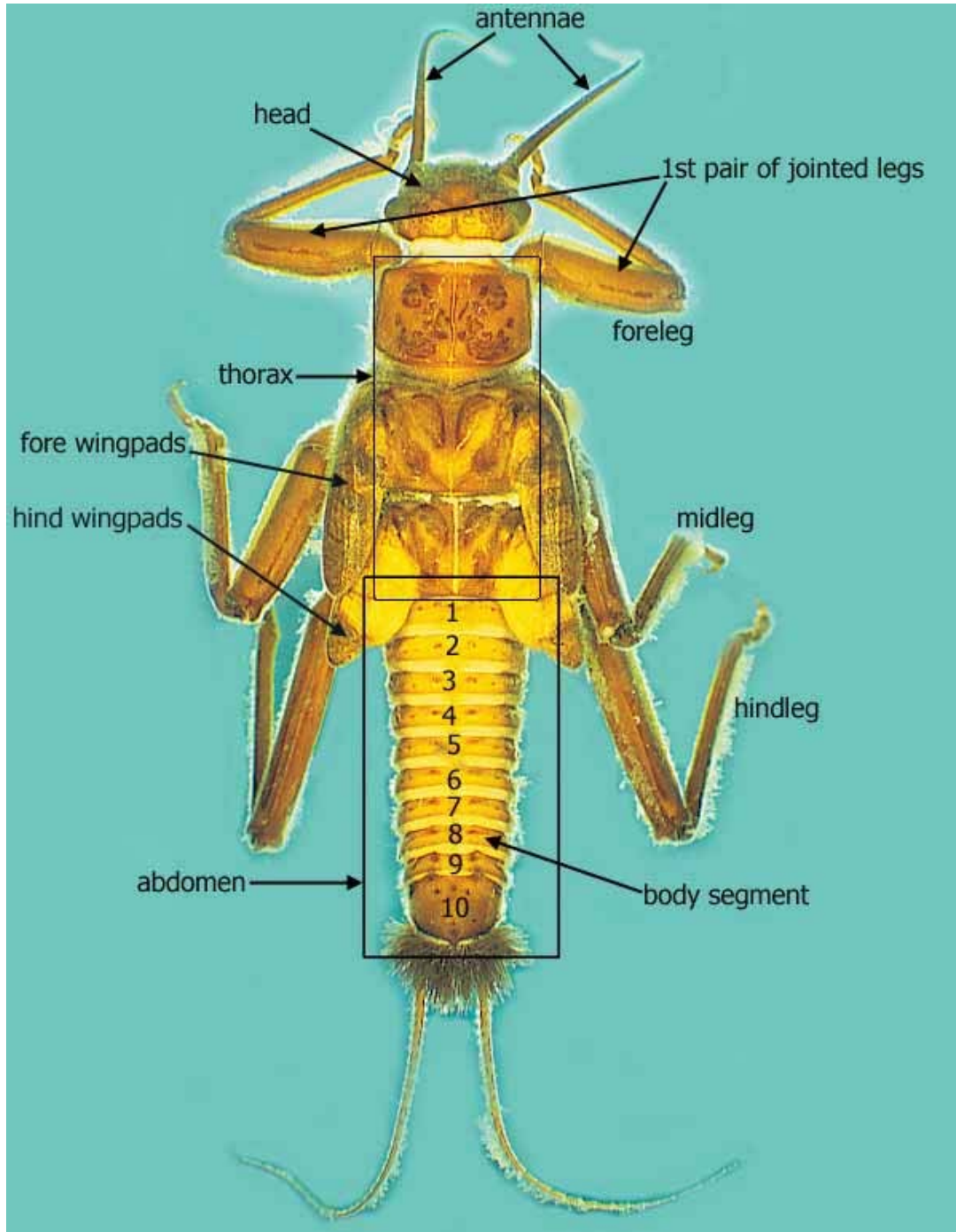
Australian Freshwater Invertebrates

An interactive guide with colour digital imagery to assist in the identification of aquatic invertebrates.



nymph - dorsal view

Insecta (insects)



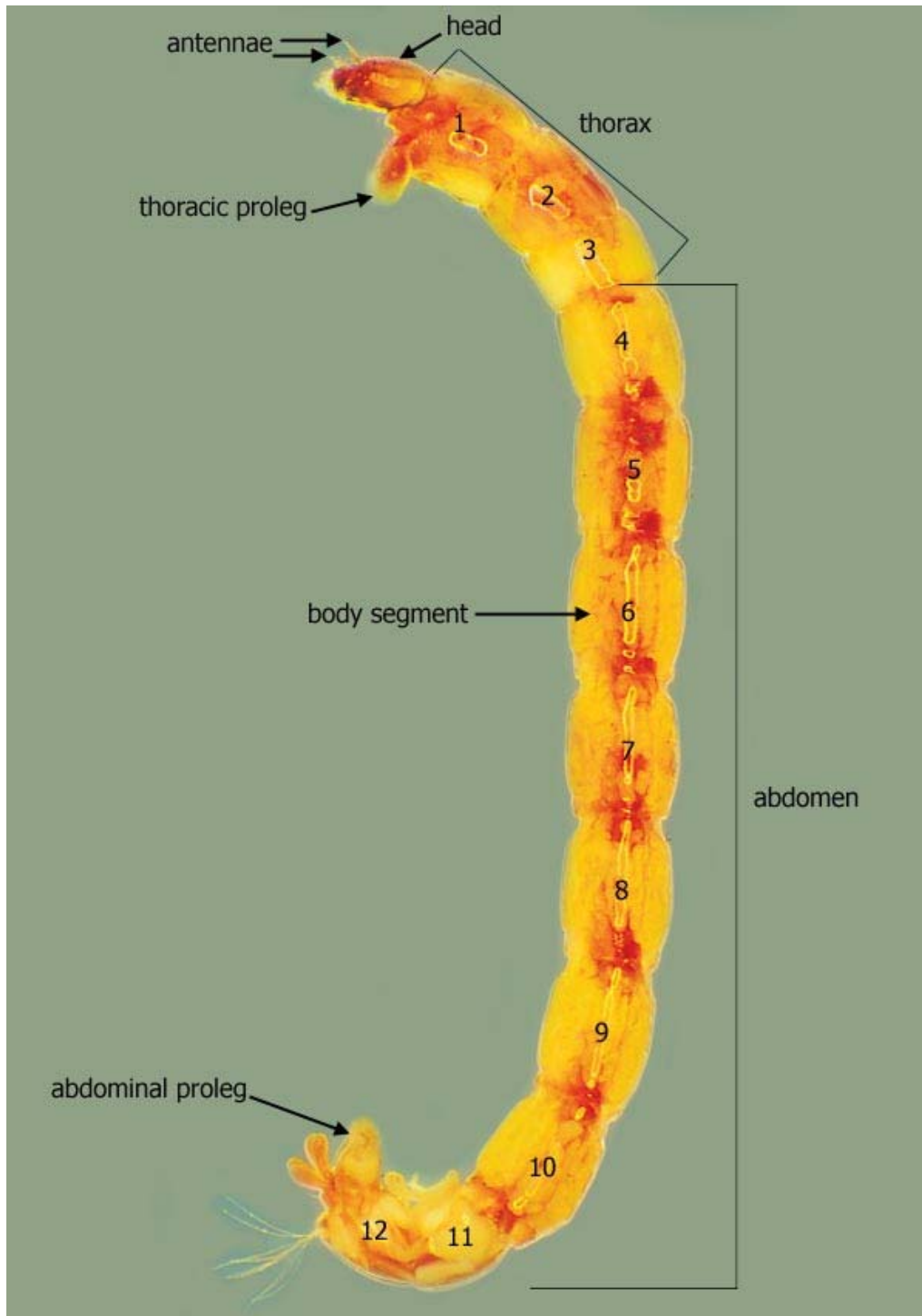
Australian Freshwater Invertebrates

An interactive guide with colour digital imagery to assist in the identification of aquatic invertebrates.



larva - lateral view

Insecta (insects)

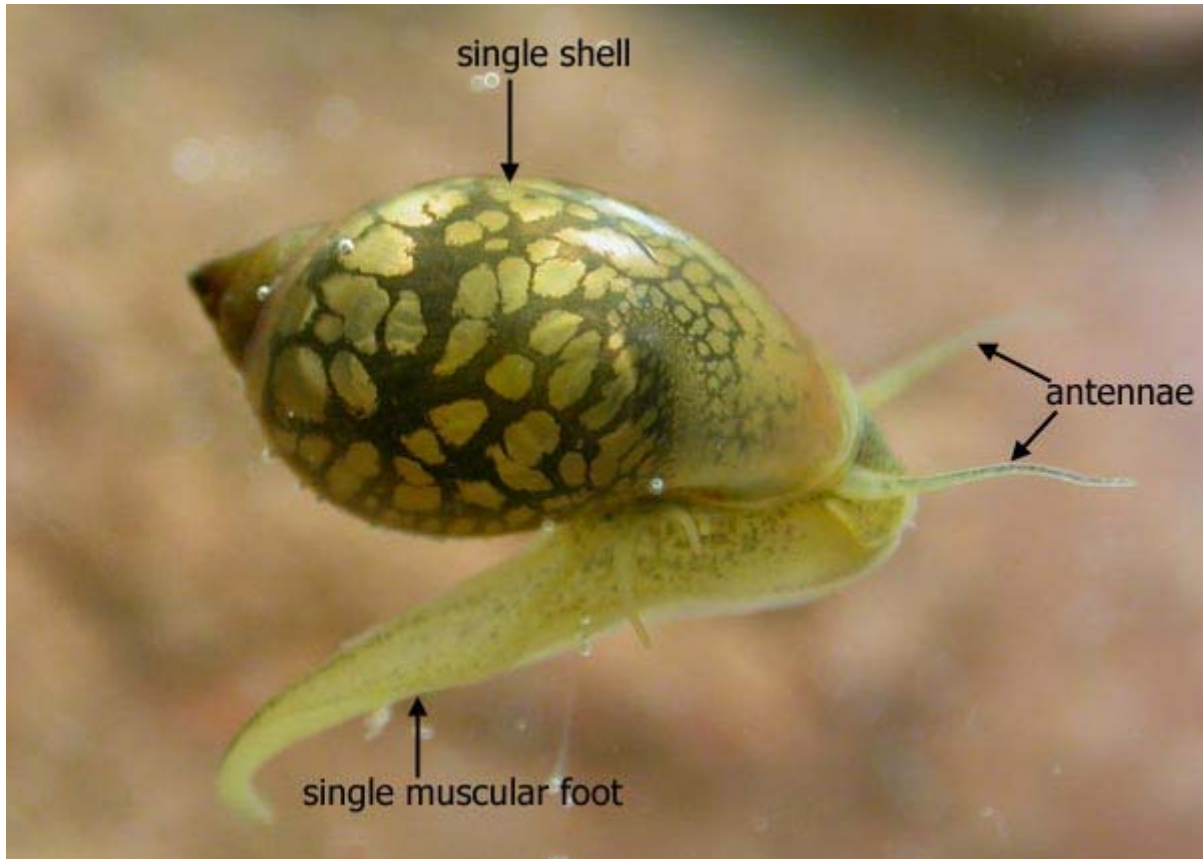


Australian Freshwater Invertebrates

An interactive guide with colour digital imagery to assist in the identification of aquatic invertebrates.

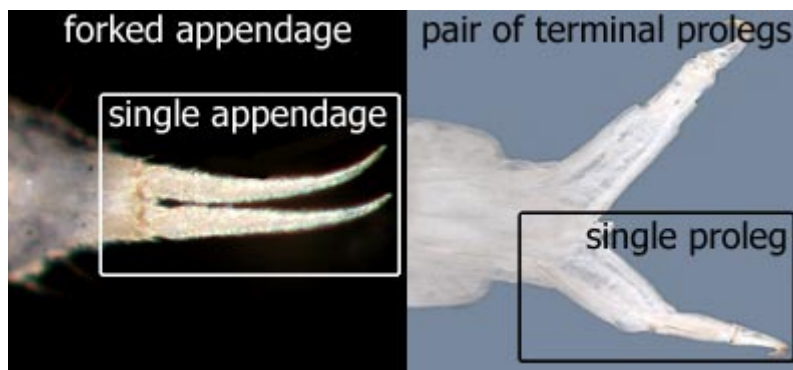


adult - lateral view
Gastropoda (snail)



abdominal appendages

Collembola (springtails) vs. Insecta (insects) -



Australian Freshwater Invertebrates

An interactive guide with colour digital imagery to assist in the identification of aquatic invertebrates.



lateral projections - Annelida (segmented worms and leeches) -

